



TAKE FREE
English

福生

powered by



FUSSA

in TOKYO



1 JAPANESE **SAKE**
Brewery
tour

Experience
BEST

LIKE!

3



2

AMERICAN

CULTURE

Base Side
Street



3
FUSSA
GOURMET

Fussa Dog



and more...

Brewery tour

Sake Brewery in Fussa

High-quality water is essential for sake brewing. Underground waters flowing from the Chichibu Mountains form springs at Fussa City. Visit two breweries manufacturing Japanese sake with these underground waters.

Tamura Shuzojo

URL <http://www.seishu-kasen.com/>



This brewery provided the famous Tokyo-brand sake, known as Kasen, which was served at a dinner party for world leaders at the Tokyo Summit. It was established in the late Edo Period, in 1822. The spacious grounds are home to historical buildings registered as cultural properties. In 2016, the Emperor and Empress at the time took a rest in one of these buildings.

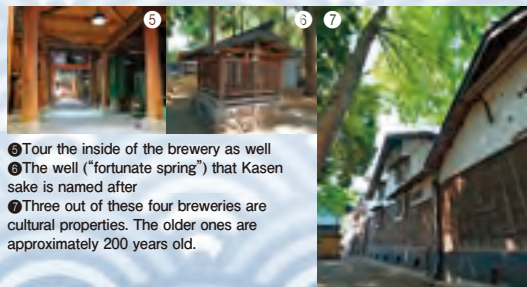


- ① Many buildings with brick chimneys and white walls are registered as cultural properties.
- ② The Tamagawa Aqueduct runs right alongside the grounds.
- ③ A water wheel hut serves on a corner of the spacious garden.
- ④ Commemorative monument visited by the Emperor and Empress.



Experience▶

Tours can be arranged for groups of 10 or more people. Reservations are required, either by Internet or by telephone. Held at all times except the months of December and January, tours are free of charge, and last approximately one hour. Guides provide information on the brewery as well as various features on the grounds. After the tour, participants are treated to a few different varieties of Japanese sake.



- ⑤ Tour the inside of the brewery as well
- ⑥ The well ("fortunate spring") that Kasen sake is named after
- ⑦ Three out of these four breweries are cultural properties. The older ones are approximately 200 years old.

Shopping▶

Products are available for purchase at the office. Kasen, a famous sake of the Tamura Shuzojo brewery, comes in everything from regular sake to top-quality *daiginjo*.



- ⑧ Junmai daiginjo: 1,800ml, ¥10,800 (tax included)
- ⑨ Junmai ginjo: 1,800ml, ¥3,240 (tax included)
- ⑩ Special honjozo Maboroshi no Sake: 1,800ml, ¥2,160 (tax included)

MAP P.15 A-2

2

How to view icons: ①Address ②Telephone number ③Hours
④Days closed/Regular day(s) closed ⑤Admission ⑥Transport access ⑦Parking



Ishikawa Brewery

URL <http://www.tamajiman.co.jp/>



- ① Water used in the brewing process is pumped from a depth of 150m.
- ② This main warehouse is a Registered Cultural Property and the biggest of its kind in the Kanto region.
- ③ White-walled historic building
- ④ The "husband-and-wife" zelkova trees symbolize the lucky god and goddess Daikokuten and Benzaiten, representing the water and rice of the brewing process respectively.

Shopping▶

At our Sakesera store, in addition to Japanese sake and beer, sweets, cosmetics, and more made from Japanese sake are also available for purchase.

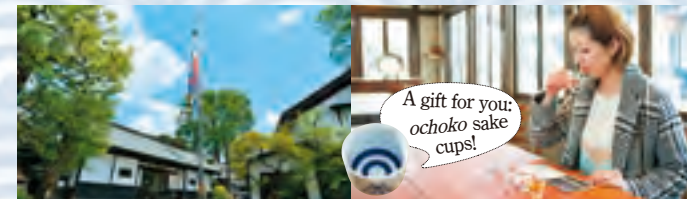


- ⑤ The store located in a renovated rice granary.
- ⑥ Sake by-product-infused soaps (¥540), cookies (¥216), and bath additives (¥280)
- ⑦ Unfiltered Pure Rice Tamajiman made from koshihikari: 720ml, ¥972
- ⑧ Beer varieties made using the same water as Japanese sake: ¥626
- ⑨ Our popular plum wines: 500ml, ¥1,296 (tax included on all items)



Experience▶

The Tamajiman (Japanese sake) tour of the Japanese sake brewery is extremely popular (reserve by phone or through the Website). Tours start at 10:30 am, taking about 45 minutes in total. The cost is ¥700 per person including tasting of our Tamajiman sake as well as an *ochoko* (sake cup) souvenir. Check the Website for more details on our tours.



- ① Take the easy walking route to tour the grounds as you like.

- ② Take the Tamajiman tour to try and compare different types of sake. It's lots of fun!

Eating▶ SAKE+BEER+Zougura OMUSUBI

This rice ball shop also offers Japanese sake, beer, foods you can only find at a brewery, sweets, and



more. Takeout also available.

Next to the beer brewery is the Fussa no Birugoya, which is primarily an Italian restaurant. (See P. 8)

- ① Kumagawa, Fussa City ② 042-530-5057 ③ 10:30-17:15 ④ Tuesdays ⑤ 20 minutes' walk from JR Haijima Station ⑥ Parking available

MAP P.15 B-4



Experience▶ Seigan-in Temple

The beauty of Japanese gardens heals the soul.

MAP P.15 A-2

The Seigan-in Temple, a temple of the Rinzaï sect was built over the period from the end of the 14th century to the beginning of the 15th century. There is a spring on the temple grounds, giving rise to a pond. The well-maintained trees and the stunningly clear waters of the pond highlight the Japanese garden. The Main Hall and Benten Hall are beautiful examples of Buddhist architecture.

- ▶ Japanese gardens are one of the ten scenic views of the city.
- ▶ A striking bell tower alongside the pond

507 Fussa, Fussa City ☎042-551-1986 📅 Sunrise-sunset 📅 Open daily year-round 📍 10 minutes' walk from JR Fussa Station 🅐 Parking available

Japanese Culture

WA in Fussa

Because Fussa City is home to the Yokota Air Base, the city tends to carry a distinctively "American" image. While this is warranted, the truth is that there are also numerous places where one can get a feel for Japanese culture as well.

Experience▶ Fussa Shinmei-sha Shrine

Local Shinto deities

MAP P.15 A-2

This temple, located along the Shin-Okutama Street, was built in 1874 to enshrine all of the deities of the local area. Proceeding through the stone torii gate and along the temple approach, you find the front shrine on the right. The very dignified current shrine building was rebuilt in 1972. The subordinate Yakumo Shrine festival is a leading festival of Fussa City, showcasing many *mikoshi* portable shrines and floats.

1081 Fussa, Fussa City ☎042-551-4899 📅 Pay your respects at the shrine at any time 📅 Open daily year-round 📍 5 minutes' walk from JR Fussa Station 🅐 No parking



▶ Believed to bring business and academic success

Experience▶ Former Residence of Yamaju-Tamura Family

Bringing visitors the atmosphere of the Meiji Period

MAP P.15 A-2

This traditional Japanese home is situated on the Shukubashi-dori Street, the old main street of the area. It was built in 1902 for a branch family of the Tamura Shuzojo brewery. It is a spacious wooden single-story house of approximately 270 square meters. With a hallway encircling six rooms, the construction is typically Japanese. An invaluable example of Meiji Period architecture, it is registered as a nationally recognized intangible cultural asset. Open to the public.

1158 Fussa, Fussa City ☎042-530-1120 (Museum of Fussa Local History, Folklore & Nature) 📅 10:00-16:00 📅 Mondays open where a national holiday falls on a Monday, closed the next day instead! 🅐 Free of charge 📍 7 minutes' walk from JR Fussa Station 🅐 Parking available



▶ Tour the house



▶ The warehouse in back is also a registered cultural property.



▶ Lived-in through 2012



Experience▶ MAP P.15 A-1~C-4

Tamagawa Aqueduct (near Shinbori Bridge)

Waterway built during the Edo Period

This artificial waterway was built during the Edo Period to provide drinking water to the people of Edo. Located in the north of Fussa City, it flows roughly 43 kilometers from Hamura City to the area currently known as Yotsuya, from where it was distributed to Edo. To the present day, part of this system remains a waterworks facility managed by the Tokyo Metropolitan Government Bureau of Waterworks. This waterfront area surrounded by greenery is a favorite place for residents to relax.

▶ 15 minutes' walk from JR Fussa Station (to Shinbori Bridge)

▶ The Tamagawa Aqueduct is visible from the Shinbori Bridge. The cool waters flow all year round.

✕Eating▶ MAP P.15 B-3

Hamazen (restaurant with fish tanks for fresh fish)

We're proud to say we use local ingredients—and the freshest fish—in our dishes!

This spacious restaurant is set up with counter space surrounding a giant fish tank. We recommend the Nishi-Tama Nigiwai Gozen (¥1,980) featuring live fish, sushi, and more with an emphasis on seasonal delights and the concept of "locally produced, locally consumed." Lunch and dinner are priced around ¥1,500 and ¥2,500 respectively.

1018 Kumagawa, Fussa City ☎042-551-0035 📅 11:00-22:00 📅 Open daily year-round 📍 5 minutes' walk from JR Kumagawa Station, 10 minutes' walk from JR Ushihama Station 🅐 Parking available



▶ Some areas have pedestrian walkways.



▶ Nishitama Nigiwai Gozen, summer seasonal dish
▶ Have the fish you just caught cooked for you!



▶ Korakuen traditional Japanese restaurant offers private seating only.

✕Eating▶ MAP P.15 B-3

Shikoan (restaurant for soba noodles and sake)

Try handmade soba noodles together with local sake



Have a meal of our *nihachi* soba noodles (made with two parts udon flour to eight parts soba flour). For our soba noodles, texture and aroma are considered important. Moreover, our noodle has a mildly sweet flavor. Try out our special combo of local Fussa sake (choose three out of five varieties) and soba noodles.



▶ Enjoy soba noodles and three types of local sake of your choice, Kiki-Zake Set: ¥800

68 Shimo, Fussa City ☎042-551-2843 📅 11:00-14:30, 17:00-20:30 📅 Tuesdays and Wednesdays 📍 5 minutes' walk from JR Ushihama Station 🅐 Parking available



▶ Tucked away in a residential area
▶ Tempura combination including eggplant, maitake, and more: ¥1,340

Take a walk along the Base Side Street

American style, even though we're in Japan?!



Even just looking at the sign is a fun thing!

National Route 16, which runs alongside the Yokota Air Base, is dotted with unique shops and restaurants.



Experience

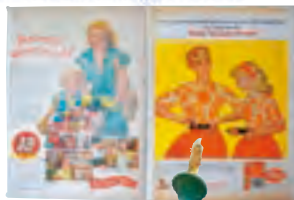
Fussa American House

Take in a retro-American atmosphere

This house, built in 1958 for U.S. military personnel, is very close to the original. After the military family who lived in this three-bedroom home departed, Japanese people took it over and lived there for a long period. Fussa City and shopping streets associations have collaborated to repair and preserve the property, recreating the atmosphere of the 1950s.

☎ Fussa G-14, 2476-1 Fussa, Fussa City ☎ 042-513-0432
☎ 11:00-17:00 ☎ Monday-Thursday ☎ Free of charge
☎ 10 minutes' walk from JR Ushihama Station ☎ No parking

☎ In 2014 the municipality decided that the property would be preserved.



☎ A stylish retro American advertisement
☎ The garden has a replica of the Statue of Liberty!



☎ Photos and other materials are on exhibit inside.

Eating Fresh Bagels Café Hoop

Many visitors come from the base

Visitors feel like they're in the U.S. at this bagel specialty store offering chewy bagels. In addition to the café menu that includes bagel sandwiches, soups, and more, there are approximately 40 types of bagels available for takeout. They make great gifts! The Fussa Dog is also available here. (See P. 10)

☎ 2475 Fussa, Fussa City ☎ 042-530-8877 ☎ 7:00-19:00 ☎ Open daily year-round ☎ 10 minutes' walk from JR Ushihama Station ☎ Parking available

☎ Bagels for takeout: ¥140-

☎ The interior décor features wood everywhere.



☎ The teriyaki sandwich, a favorite for Americans too: ¥680

Eating

BLUE SEAL ICE CREAM Fussa Store

This unique ice cream was born in the U.S., raised in Okinawa

We offer approximately 30 regular flavors, ranging from the popular standards to Instagram-worthy colorful varieties—as well as seasonal flavors, plus parfaits and even sundaes.

☎ 2475 Fussa, Fussa City ☎ 042-551-0539 ☎ 11:00-22:00
☎ Open daily year-round ☎ 10 minutes' walk from JR Ushihama Station ☎ Parking available



☎ The sign is recognizable even from far away.



☎ Strawberry or our popular Blue Wave flavor, single: ¥360 (including tax)

Eating

Pizza & Italian Restaurant NICOLA Yokota flagship store

Authentic American pizza

MAP P.15 C-2

Choose from our highly recommended Mixed Pizza, or our Plain Pizza—for which you can choose your toppings. In addition to pasta, we also offer many other menu items including steak.

☎ Nicola Mix Pizza with tomato sauce and gouda cheese: ¥980 (small)
☎ Live music on Sundays



☎ 2402 Fussa, Fussa City ☎ 042-551-0707
☎ 11:00-22:00 ☎ Tuesdays and first Monday of the month (open where a national holiday falls on a Tuesday/first Monday, closed the next day instead) ☎ 12 minutes' walk from JR Ushihama Station ☎ Parking available





Ⓔ Terrace seating for 40

European-style cooking

Fussa no Birugoya

This restaurant inside the brewery serves craft beer brewed right here.

Choose from our menu of Italian dishes as well as choices made with local ingredients. The menu also includes seven varieties of craft beer and Japanese sake from Ishikawa Brewery, as well as various wines and cocktails. Lunch is also served on weekdays.

Ⓔ 1 Kumagawa, Fussa City ☎042-553-0171
Ⓔ 11:30-20:30 ☑ Tuesdays ☑ 20 minutes' walk from JR Haijima Station ☑ Parking available MAP P.15 B-4



Ⓔ Fresh-brewed beer (left: Pale Ale, right: Dunkel, ¥500 each)



Ⓔ Indoor seating for 50

Ethnic food restaurants

Popular even with local people

Food from many different countries is available in Fussa City—but there's more to it than just the menu. In addition to the food, you will find establishments that are fun to go into, including restaurants attached to breweries, former military housing remodeled into restaurants, and more.



Brazilian food

Nanbeishokudo

Try Brazilian soul food!

This is a great place to sample Brazilian food including churrasco, which is chunks of meat slow-roasted on skewers until soft. Choose from a long list of cocktails and juices as well.



Ⓔ Look for the Brazilian flag! Ⓔ Counter seats on 1st floor, private rooms on 2nd floor

Ⓔ 99-12 Ushihama, Fussa City ☎080-9425-0141 ☑ 12:00-15:00, 18:00-5:00 ☑ Open daily year-round ☑ 1 minutes' walk from JR Ushihama Station ☑ Parking available MAP P.15 B-3



Ⓔ Using former military housing

Italian food

Un Quinto

An Italian restaurant in former military housing

This restaurant is located in former U.S. military housing along Route 16. The handwritten English graffiti on the walls gives the place a stylish look.



Menu options include handmade pasta, meat and fish dishes, and more—all of which are authentic.



Ⓔ Find signatures of famous people on the wall Ⓔ Italian rice dish with fish and chicken in tomato sauce on saffron rice: ¥1,780

Ⓔ 2270-B15 Fussa, Fussa City ☎042-552-6052
Ⓔ 11:30-15:00, 17:00-21:30 (Fridays, Saturdays, Sundays, and national holidays until 22:00) ☑ Open daily year-round
Ⓔ 14 minutes' walk from JR Fussa Station ☑ Parking available MAP P.15 C-2

Chinese food

NIRAMANJU Fussa

Shop where the *nira manju* was first created



Ⓔ A charming sign

Nira manju (leek buns) are made by mixing leeks, fish paste, bamboo shoots, and shrimp. The mix is then wrapped by hand in the dough. The buns are first boiled and then fried—and the result is a crispy outside and fluffy inside.



Ⓔ Original *nira manju*: ¥290 each, Takeout available for orders of two or more.
Ⓔ A restaurant with a distinctively Chinese atmosphere

Ⓔ 2218 Fussa, Fussa City ☎042-553-0177
Ⓔ 11:30-13:45, 17:00-21:00, Fridays until 21:30 Saturdays, Sundays, and national holidays: 11:30-21:30 ☑ Open daily year-round ☑ 8 minutes' walk from JR Higashi-Fussa Station, 15 minutes' walk from JR Fussa Station
Ⓔ Parking available MAP P.15 B-2



Ⓔ German-style building



European-style cuisine

Stuben Ohtama

Ohtama Ham brand shop adjacent to the plant



Ⓔ Restaurant on 2nd floor
Ⓔ Salt-boiled pork shank on bone, pickled ham hock: ¥3,218 (tax included, nighttime only)

This is one of the few restaurants where TOKYO X brand pork can be had. Drink local beer along with German cooking as well as our in-house ham and sausage. There is also a shop on the 1st floor. Get the Fussa Dog here, too! (See P. 11)



Ⓔ Local beer medium mug: ¥691



Ⓔ 785 Fussa, Fussa City ☎042-551-1325 ☑ 11:30-14:00 (Saturdays, Sundays, and national holidays until 15:00), 17:30-21:30 (Saturdays, Sundays, and national holidays, from 17:00)
Ⓔ Tuesdays ☑ 3 minutes' walk from JR Fussa Station
Ⓔ Parking available MAP P.15 B-2

Local gourmet

福生ドッグ

Fussa Dog

Compare as you go

☞ Eat at our restaurant, or take out: ¥600

The Fussa Dog is a unique kind of hot dog. It always features either Ohtama Ham or Fussa Ham brand sausage on original buns and sauces made at each location. It's very popular with tourists!



☞ Wrapped in aluminum foil: ¥330, takeout only

Recommended by Korean writer Shin
Koreans love spicy salsa sauce and cream cheese together!



☞ Spicy-taco style Fussa Dog A with TOKYO X sausage: ¥370

A Fresh Bagels Café Hoop

A hot dog where you can truly taste the individual ingredients

The Fussa Dog bun for this shop is an original baguette. The delicious flavor of the ingredients really comes through with this simple hot dog, featuring only Fussa Ham brand sausage and lettuce.



☞ 2475 Fussa, Fussa City
☎ 042-530-8877 ☎ 7:00-19:00
☑ Open daily year-round ☑ 10 minutes' walk from JR Ushihama Station ☑ Parking available
MAP P.15 C-2

B Bread Garden

Try our salsa sauce made in-house: we're proud of it!

Our salsa sauce, crafted in-house, is savory and only mildly spicy. Pair it with cream cheese to bring out the flavor of the sausage. And toast the bun for a very satisfyingly crispy texture!



☞ 1046 Fussa, Fussa City
☎ 042-553-7234 ☎ 9:30-20:00
☑ Sundays and national holidays
☑ 2 minutes' walk from JR Fussa Station ☑ No parking
MAP P.15 A-2

C Cloud Nine Bakery

Choose from two different flavors

Available with Ohtama Ham or Fussa Ham brand sausage. The sauce and other ingredients differ to suit the different kinds of sausage. Note that these products sell out. When they're gone, they're gone!



☞ Sato Bldg. 1F, 798 Fussa, Fussa City
☎ 042-530-7959 ☎ 10:00-19:00
☑ Wednesdays, one other day per month (irregular) ☑ 2 minutes' walk from JR Fussa Station ☑ Parking available
MAP P.15 B-2

D Koryori Hitoyo

Japanese-style taste

This is a Japanese-style hot dog. The bun is topped with a special in-house onion miso, perilla leaf, sesame, and ground nori seaweed. Great with Japanese sake! Open for dinner only.



☞ 23 Honcho, Fussa City
☎ 042-530-7959 ☎ 17:00-24:00
☑ Mondays
☑ 4 minutes' walk from JR Fussa Station ☑ No parking
MAP P.15 B-2



☞ Takeout only during daytime hours: ¥500 (tax included)



☞ A luxurious choice, similar to a-la-carte style. Takeout only. ¥540 (tax included)



☞ The bun is a pretzel specially shaped for eating with a hot dog, ¥496.



Recommended by American writer John
Be careful of the chili con carne: you might get hooked!

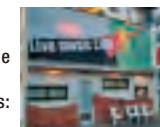
☞ No takeout. Add salad, soup, and a drink for lunch: ¥800 (tax included)



E Live Music Cafe UZU

A hot dog for a live music club!

This authentic hot dog is made with our own bread baked in-house using Japanese-grown wheat flour and sausage. This club has been a launching pad for many big acts. See the music schedule as follows: <https://uzu69.com/>



☞ 1-3-12 Musashinodai, Fussa City
☎ 042-551-4477 ☎ 11:00-15:00, 20:00-24:00
☑ Monday, Saturday, and Sunday daytime/Monday and Tuesday nights ☑ 3 minutes' walk from JR Higashi-Fussa Station ☑ Parking available
MAP P.15 B-1

F Stuben Ohtama

A perfect match of full flavors

Visitors can have a seat and eat at the Ohtama Ham restaurant, Stuben Ohtama. The sausage is put together with a piece of TOKYO X bacon—for a big-portion hot dog! It tastes even better with ketchup or other condiments. Also available for takeout.

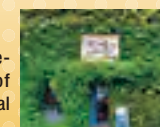


☞ 785 Fussa, Fussa City
☎ 042-551-1325 ☎ 11:30-14:00 (Saturdays, Sundays, and national holidays until 15:00), 17:30-21:30 (Saturdays, Sundays, and national holidays, from 17:00)
☑ Tuesdays
☑ 3 minutes' walk from JR Fussa Station ☑ Parking available
MAP P.15 B-2

G Ki wo Ueru Restaurant Aurora

The secret is in our special spicy sauce!

Since it's hand-made to order, it comes out sizzling-hot! Our course-ground chicken is served Mexican-style with our sauce crafted of tomatoes and a special blend of spices. The buns are made with natural yeast and free of additives. They've also got a great texture!



☞ 2477 Fussa Ninomiya, Fussa City
☎ 042-539-4139 ☎ 11:30-14:00, 18:00-21:00
☑ Mondays (open where a national holiday falls on a Monday, closed the next day instead) ☑ 12 minutes' walk from JR Ushihama Station ☑ No parking
MAP P.15 C-3

H Jesse James Fussa Store

Our specialty chili con carne is the sauce for our hot dogs!

Our sauce is a chili con carne made with beef and vegetables such as tomatoes and hot peppers. Our Fussa Ham brand sausage is a perfect match for our in-house baked breads with sesame and our spicy sauce.



☞ WAKOHRE Fussa 106, 72-2 Honcho, Fussa City
☎ 042-551-4222 ☎ 12:00-13:15 (weekdays only), 17:00-22:30
*Cover charge applies at night
☑ Sundays ☑ 5 minutes' walk from JR Fussa Station ☑ No parking
MAP P.15 B-2



Fussa Event Calendar

Events	Date of event	Location
Spring		
Fussa Cherry Blossom Festival	Late March–early April	Main venue: Myojinshita Park, along the Tama River embankments (Nagata Bridge–Mutsumi Bridge)
Fussa Large Kite-Flying Contest	May 5	Tamagawa Chuo Park
Fussa Environment Festival	Early June	Tamagawa Chuo Park
Fussa Firefly Festival	Mid-June	Hotaru Park/area near Ome Bridge, the Tamagawa Aqueduct
Summer		
Fussa Tanabata Festival	Early August	Fussa Station shopping center area
Yokota Air Base Japanese-American Friendship Festival	Mid-September	Yokota Air Base
Fall		
International Fair	Mid-October	Yokota Air Base shopping street along National Route 16
Fussa Fureai Festival	Late October	Municipal Fussa Baseball Ground
Winter		
Fussa Winter Illumination	Early-to-mid December	Fussa Station West Exit, Ekimae-dori Street, Base Side Street

Other events Flea markets in the city

Flea markets are not only good for the environment; they also provide opportunities to meet different people, all in a festival atmosphere. Flea markets are regularly held at the Kumagawa Genki Hiroba near the Kumagawa Station and at the Friendship Park along Route 16.

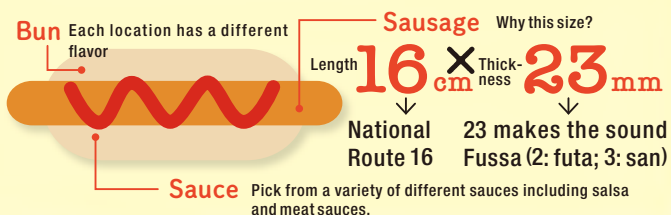
Fun Facts about Fussa City

What's Fussa Dog?

There are certain rules to making the Fussa Dog! One such rule is that the sausage, made at a Fussa Ham brand plant, must be of a specific size. The buns and sauces are made by individual sellers. The result is a very unique hot dog! (See P. 10)

Rules of the FUSSA DOG

The Fussa Dog is made with sausage from either the Ohtama Ham or Fussa Ham brands. The dog is 16 centimeters in length and 23 millimeters wide—it's a rule!



A municipal office that's like a park! MAP P.15B-2

Located just a five-minute walk from Fussa station, this innovative design integrates the Town Hall buildings with its garden. This grassy park is an open space of gently undulating lines.



Takke☆☆

The mascot of Fussa City, Takke is a bamboo fairy who appears everywhere. He gives high-fives to make everybody happy!

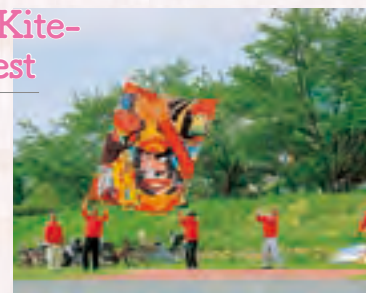


Fussa Cherry Blossom Festival

This stretch of about 2.5 kilometers along the embankments of the Tama River is regarded as a primary flower-viewing spot of Fussa City. The area draws large crowds of people when the blossoms are in full bloom along the tree-lined street, and you might see some people eating bento lunchboxes along the embankments. Lots of events are held at this time.

Fussa Large Kite-Flying Contest

This is a special event for Children's Day, the purpose of which is to wish for the healthy growth of our children. Local town associations gather to fly their giant kites. Everyone's very proud of them!



Fussa Firefly Festival

Since long ago, the Tamagawa Aqueduct has been an ideal place for fireflies. These creatures offer a magical show every year. There is even a local festival where people watch the Genji fireflies raised by the locals. At festival time the venue is dotted with temporary stalls selling food and other goods.



Fussa Tanabata Festival

This is Fussa City's biggest event, drawing some 400,000 tourist every year. The many decorations put out for the Tanabata Festival shine at night for an even more beautiful sight. There are also other events happening at this time, such as the Orihime (Vega) contest, a traditional minyo (folk dance) parade, stalls operated by local people, and more.

Fussa Winter Illumination

In December, the different areas of Fussa City are decorated with gorgeous light displays, which last from sundown to the middle of the night (times vary depending on the location). This is a great place to experience the Christmas mood all around the town.



Yokota Air Base Japanese-American Friendship Festival

Since the event is held at the base, which is normally off-limits to the public, it draws crowds of people from near and far. There are also airplane exhibits, music performed by Japanese and American bands, as well as stalls offering American goods such as hamburgers and hot dogs.



- ① The room is packed with antique furniture.
- ② Basket crafted of akebi vine: ¥8,000
- ③ White porcelain bowl: ¥800
- ④ Look for the red windmill!



Retro furniture

DEMOMODE FUKUNAKA

This shop is decorated in the Japanese aesthetic. You'll find that the restored furniture has a great deal of character, and that it stands up to use-and-abuse. It also offers easy-to-take-home items such as retro metal fixtures, dishware, and more. There's even a diner!

- Q 1148-4 Fussa, Fussa City Q 042-553-3981 L 11:00-20:00
- Open daily year-round 15 minutes' walk from JR Ushihama Station P Parking available

MAP P.15 C-3

Original items made with antique materials

Romantica Antiques

Antique variety goods

This is an antique consignment shop. The store manager travels around Japan to antique markets, selecting things that appeal to him and then selling them back at the store. His wares including original lamps made with antique or even waste materials.

- ① A handmade stand with the light from a sewing machine: ¥12,000
- ② Glass medicine bottle, great as a single-flower vase: ¥800
- ③ The store is filled with original lamps, baskets, and more.
- ④ There's some interesting stuff outside, too!



- Q 2049 Fussa, Fussa City Q 042-553-6166
- L 13:00-18:00 Periodically closed (inquire prior to visit) 1 minutes' walk from JR Higashi-Fussa Station P No parking

MAP P.15 C-1

Shop in

stylish variety goods stores reminiscent of the U.S.

Base Side Street is known for its many unique variety stores offering everything from antiques to handmade crafts.

Variety goods purchased in the U.S.
BIG MAMA

This shop offers tons of miscellaneous antique goods from the 1950s and 60s. The owner purchases directly from the U.S., and most of the items are not available in Japan. The selection includes numerous interior decorating pieces, Fire-King glassware, and more.



- ① Fire-King mug: ¥3,480 each
- ② Two hurricane-motif wall decorations from the 1950s: ¥24,800
- ③ Lots of pop art pieces everywhere
- ④ Look for the giant cola bottle!

- Q 2485-1 Fussa Ninomiya, Fussa City Q 042-513-7897
- L 10:00-18:00 Open daily year-round 8 minutes' walk from JR Ushihama Station P No parking

MAP P.15 C-3

A variety store selling lots of cute-and-stylish goods

TABASA

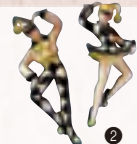
Variety goods

This store sells artisan and handmade goods, ranging from dishware to accessories to interior decorating items. Since most are one-of-a-kind, you'll find designs here that you won't get anywhere else.



- Q 2479 Fussa, Fussa City Q 042-553-1634
- L 10:00-19:00 Wednesdays and Thursdays (open on national holidays) 10 minutes' walk from JR Ushihama Station P No parking

MAP P.15 C-2



American variety goods



この地図の作成に当たっては、国土地理院長の承認を得て、同院発行の1万分1地形図及び基礎地図情報を使用した。(承認番号 令元情使、第117-059245号)

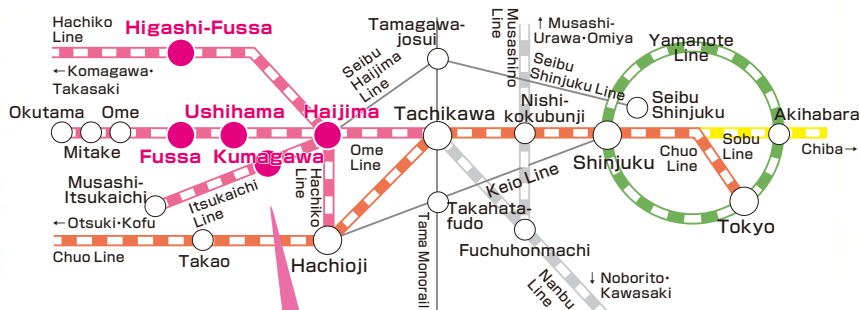


Take the JR Chuo Line/ Ome Line to Fussa



Welcome

The train is a convenient way to get to Fussa City, located in western Tokyo. On the direct train **Chuo Line** or **Ome Line Special Rapid**, it takes **46 minutes**. Even if you change trains at Tachikawa Station to the **Ome Line**, it still only takes **one hour** including wait time.



Fussa City has five JR train stations: Fussa and Ushihama on the Ome Line; Higashi-Fussa on the Hachiko Line; and Kumagawa on the Itsukaichi Line. These three lines all meet at Haijima. You may need to change trains here depending on your destination.

Published by

City Sales Promotion
Section, Living Environment
Department, Fussa City
5 Honcho, Fussa City, Tokyo
197-8501
TEL: 042-551-1740
<https://www.city.fussa.tokyo.jp>

Produced by

株式会社 昭文社
2019(令和元)年7月発行

The first place to visit when
you come to Fussa City!

Fussa City Tourist Information Center
Kuru Miru Fussa MAP P.15 B-2

23 Honcho, Fussa City ☎042-530-2341
10:00-18:00 🗓Mondays (open where a national holiday falls on a Monday, closed the next day instead) 🚶5 minutes' walk from JR Fussa Station 🚫No parking
HP <http://www.kurumiru-fussa-omotenashi.com/>

- Information current as of May 2019. Please confirm beforehand in case of changes.
- We are not responsible for any losses or damages caused by the information in this packet.
- Store business hours are noted reflecting the time of last order or final entry.
- Only regularly scheduled business holidays are listed. Temporary closures, New Years, and Obon related closures not listed.
- Prices noted do not include tax, except where otherwise indicated.
- Shobunsha Publications, Inc. 2019.7